



Jeff Thiele

I used to walk over that bridge when I was a kid
.Broken boards and all..

12h Like Reply Message



John Berg

Ya was rough shape when it got torched the final
time.

11h Like Reply Message



Reply as Eagle Historical Society



Robert Gabor

I remember walking all the way out to the bridge from
the village, but being way to scared to go over it.

11h Like Reply Message



Bill Krestan

I remember it on fire a few times....

8h Like Reply Message



Deb Pasterski West

At the back of the Hinkley property isn't it?

7h Like Reply Message



Mary Beitz

I do remember that bridge!

2h Like Reply Message



John Schoenknecht

Very interesting! Might make a good story for
Landmark magazine!



Jeff Rockteacher

I think that bridge is behind the historic house on highway 59.

20h Like Reply Message



Jason Wasielewski
Agreed

20h Like Reply Message



Reply as Eagle Historical Society



Robert Gabor

Could that be the bridge over the tracks between Eagle and North Prairie? I remember one there when I was a kid, but it was very dilapidated at that time. Probably torn down by now?

20h Like Reply Message



John Berg

Long gone, someone started it on fire and that was the last of it. Maybe mid 90s

20h Like Reply Message



Reply as Eagle Historical Society



Pete Loerke

Looks like the one behind the Hinkley Cobblestone house. It was there till after we left in the 90s. Fell into disrepair after kids kept starting it on fire.

Railroad never fixed it and eventually tore it down. 🙄

20h Like Reply Message





Andy Smith

There was a bridge just like that one over the CN&W tracks, on Highway-18, west of Sullivan, between Sullivan and Helenville. It was replaced in the 1960s with a sweeping S-curve, but you can still see the remnants of the old roadbed and pavement just to the west of and below what is now the Glacial Drumlin state trail, and the hill/rise that it led to with a 90-degree S-curve over the wooden bridge.

20h Like Reply Message



Eagle Historical Society

Thanks for all the comments. Pete said he thought he had a few more pictures of the bridge.

19h Like Reply



Pete Loerke

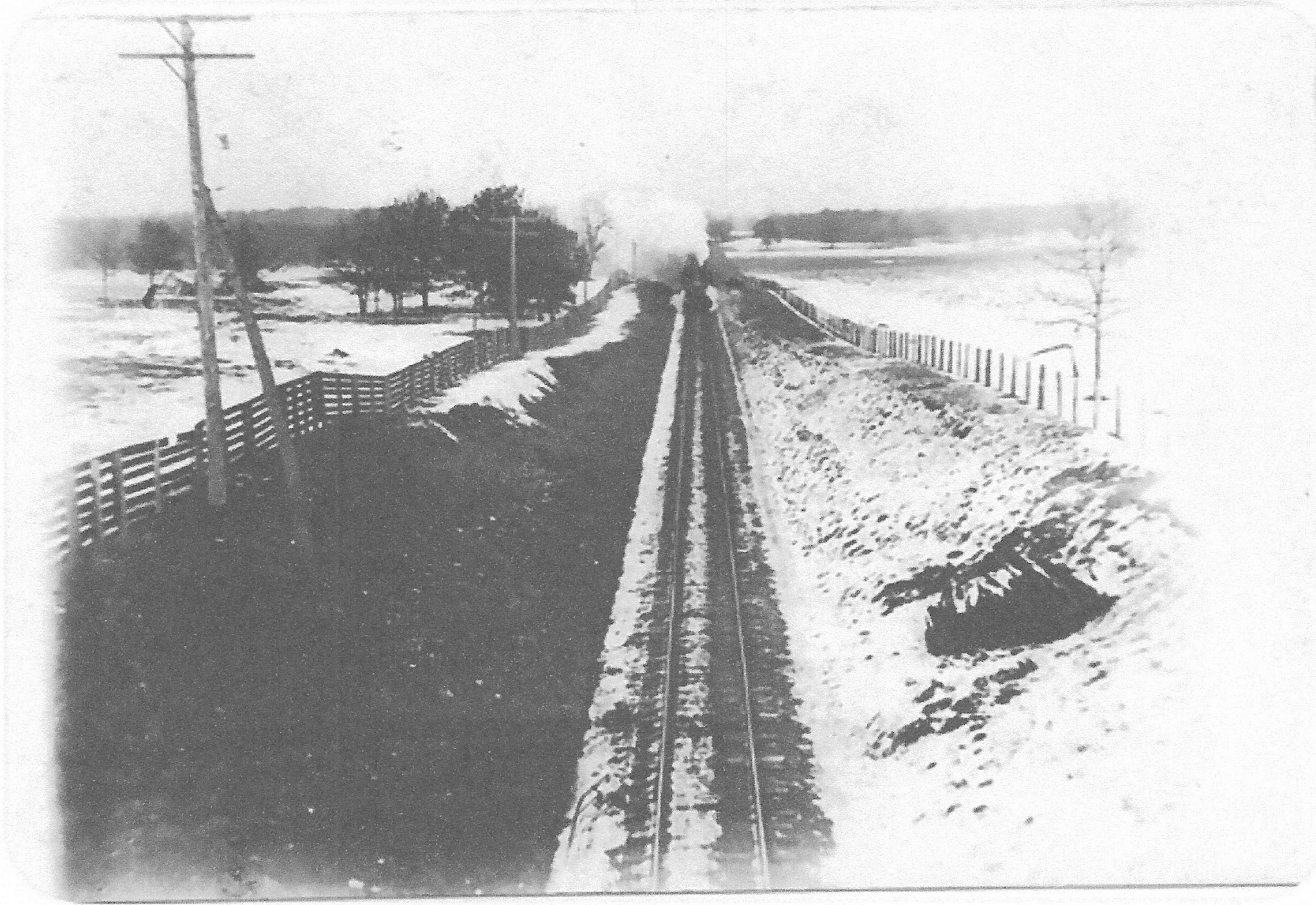
This picture I took in the late 80's. It shows the sever damage that had occurred from age and numerous fires.





Pete Loerke

This picture was taken from the bridge towards North Prairie. Notice you can see the bridge's shadow in the foreground. Picture taken by Oramel Hinkley



14h Like Reply Message



Linda Hett

This is what the bridge looked like in 1994 when we lived at the Cobblestone. The railroad finally took it down around 1999.



14h Like Reply Message



Linda Hett

This is what the bridge looked like in 1994 when we lived at the Cobblestone. The railroad finally took it down around 1999.



14h Like Reply Message



Eagle Historical Society

Thanks Pete and Linda for adding information about the bridge.

12h Like Reply



Jeni Kane Wells

This could be the same place my dad said he thinks it was by mailman road if your looking towards North Prairie? He has a fond memory of it but I don't remember what he said

11h Like Reply Message

