

# Church clock has timeless memories of Eagle

by Joan Holman

**Eagle** - The clock on top of Eagle's St. Theresa's church tells more than time to Clara Schmidt Burton. It ticks out memories before and beyond when electrical power was added in 1969.

Burton recalls that the clock was purchased and put on the church in 1905. She was born Clara Schmidt in 1896 and remembers 1905 because it was the year her youngest sister, Cecilia, was born and her older sister, Lena, married Jack Enright.

Enright was a member of the Eagle Advancement Association, which, according to Burton, donated some of the clock funds.

Like most of the members, Enright was working in Eagle. He was the first butter maker at the Eagle creamery. Ernest Smoot, George Hubbard, Eugene Mayhew, Bruno Wingerter, George and Ben Bricendenback, Harry Burton were other area business people in the Eagle area who were variously employed.

John Wilton, the Association Chairman, directed programs which were staged in the Masonic Temple that was then in Eagle.

Burton recalls, with a significant smile, that the performances and the talent on stage included her first and last appearance at 18 years of age in the play whose name she can't remember.

Wilton's work in directing local theatrical productions helped buy the Village clock. Burton's vivid memories are verified by a ledger entry at St. Theresa's church which lists contributions.

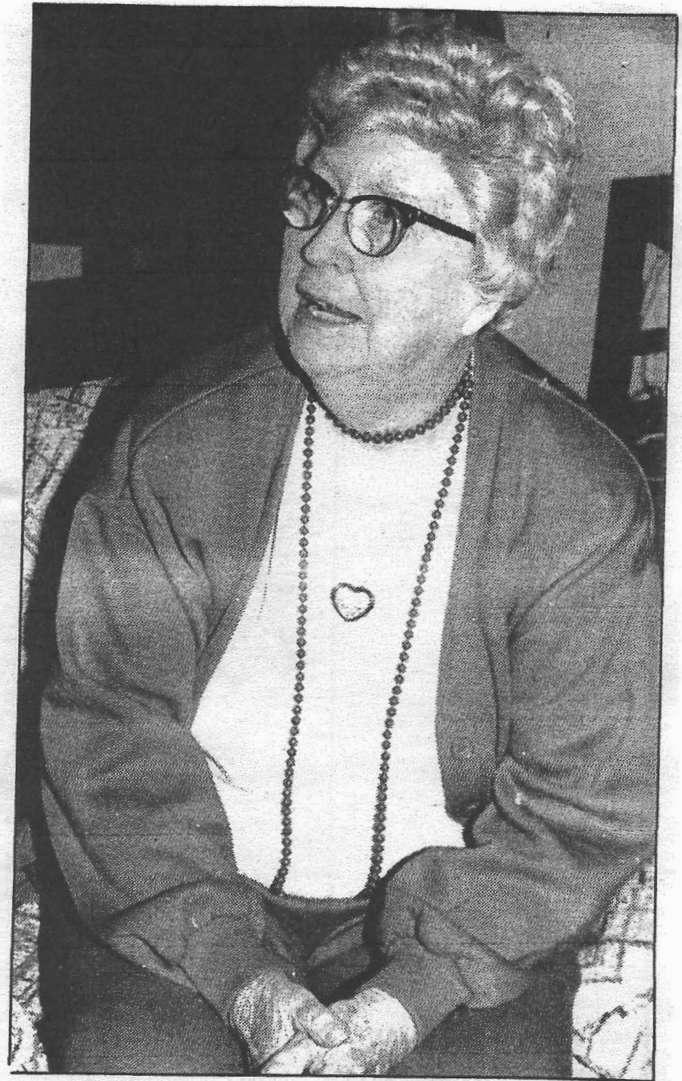
These included Pabst, Gettleman, Miller, Jung, Blatz and the Weber brewing companies. Perhaps these breweries had Eagle consumers and time in mind when the clock was bought.

The cost of the clock came to nearly \$650, all of which had been donated or worked toward by the Eagle Advancement Association. The logical place to put it was in St. Theresa's steeple, the highest point in the village with the best visibility.

In 1908, Carl Kalb was the appointed clock winder. This job continued through Milton Mueller, whose efforts were replaced by electricity in 1969. However it was lightning damage to the church in 1992 which promoted Burton's testimony.

When St. Theresa's was repairing the steeple, it was thought that the clock mechanism might be updated. Then the church was overruled by Village ownership when the clock's history was examined by Eagle's Historical Society.

However, the clock keeps ticking on for both church and that that small part of the state called the Village of Eagle.



Clara Burton of Eagle remembers the transition the clock on top of the St. Theresa's church has seen over the years. The clock was purchased in 1905, and remained a hand-wound timepiece until 1969, when electricity was connected to run the clock.

Feb. 3, 1993