

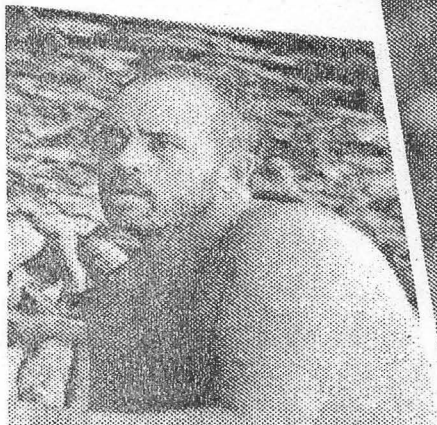
Survivor/Viewers of show brace for big surprise

■ **Richard Hatch**, 39, corporate trainer from Newport, R.I.

Signature: Obsessive need to take off his clothes, despite his less-than-svelte form.

Strategy: The most Machiavellian of the 16 castaways, he continually told the camera that he was smarter than everybody else — including members of his own alliance. An initial strength was his ability to fish, which made it harder to vote against him. He told the camera that the real reason he survived was his brilliant gamesmanship.

Quote from last episode: "Hopefully, the people who watch the show would see somebody who's kind of known what he was looking for from the beginning and has kind of worked toward his goal as ethically as he could do it."



TELEVISION

THE LAST SURVIVORS

Here's a look at the four "Survivor" finalists:

■ **Kelly Wiglesworth**, 23, river guide from Las Vegas.

Signature: A bland persona, masking her intense, conniving core.

Strategy: A nominal member of the Tagi alliance, she formed friendships with members of the opposition Pagong tribe. That backfired as members of the alliance thought she was conspiring against them. Only winning the immunity challenge two weeks in a row saved her.

Quote from last episode: "We're not evil. We just play bad people on TV."

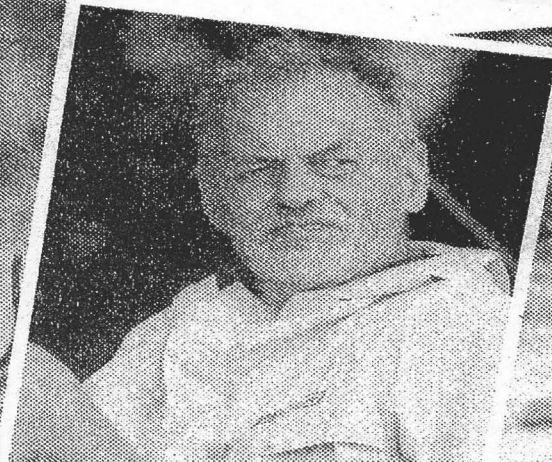


■ **Rudy Boesch**, 72, retired Navy SEAL from Virginia Beach, Va.

Signature: Quick to rip religion, sexuality or anything that doesn't fit in with his cranky view of the world.

Strategy: A loyal member of Tagi alliance dating back to the first episode, when the original 16 castaways were split into two tribes, the crusty old salt quietly worked hard at domestic tasks while conspiring with Richard and Susan to survive until the final four.

Quote from last episode: "It's a game, but it's worth a million dollars. Money talks."



■ **Susan Hawk**, 39, truck driver from Eagle, Wis.

Signature: Chronic inability to spell the names of people she voted against in weekly tribal council meetings.

Strategy: One of the key members of the Tagi alliance who turned on members of the rival Pagong tribe. She pretended to be a redneck yahoo but was one of the most devious competitors on the island of Pulau Tiga, saying one thing to one castaway and the opposite to another.

Quote from last episode: "It ain't over with yet, so you can't say who's won out yet, eh? The idea of money, money makes the world go 'round, money's greed, money's what everybody thrives for. I don't care what anybody says anymore, it's what spins us."



Show's success takes a bite out of movie business

**Box office suffers
as less hype gets heaped
onto big-screen features**

The summer movie box office is down from last year's record total in part because of interest in the CBS television show "Survivor," Paul Dergarabedian, president of the box office tracking firm Exhibitor Relations Inc., said Tuesday.

It's not that audiences were staying home — although this summer's attendance is down more than 6% — but that "Survivor" dominated the sort of media coverage that makes moviegoers curious about certain films.

Last summer, movies such as "Star Wars: Episode I — The Phantom Menace," "The Blair Witch Project" and "Austin Powers: The Spy Who Shagged Me" drove the box office to record levels in part because of media coverage, Dergarabedian said. The movie industry takes in 40% of its revenue during the summer movie season, and last year's tally of \$3 billion was a record.

This summer, Dergarabedian said, "Survivor," the political conventions "and a lot of other media events tended to overshadow what was going on at the box office, whereas the big story last summer was how well the movies were doing."

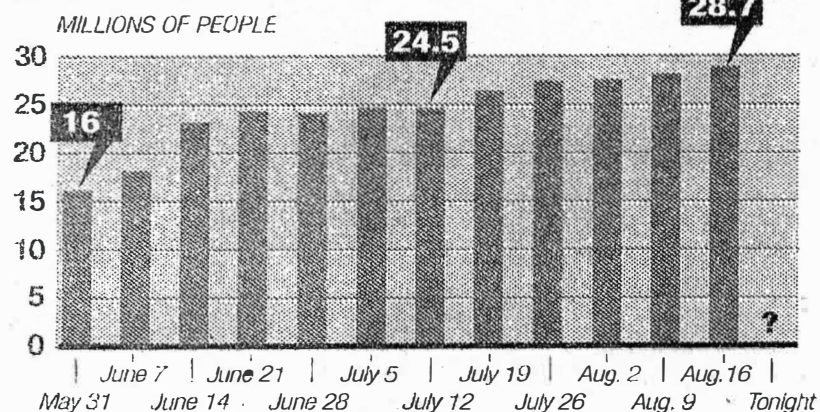
Media coverage made last summer's films "cultural phenomena" that audiences felt they must see, he said.

"There was nothing like that (in theaters) this summer. This year there was not that demand, that desire, that undeniable urge to go see a movie. That was not as prevalent as in the past where films created a frenzy in the marketplace by being the media events of the summer. This year, other things got moviegoers' attention."

— Duane Dudek

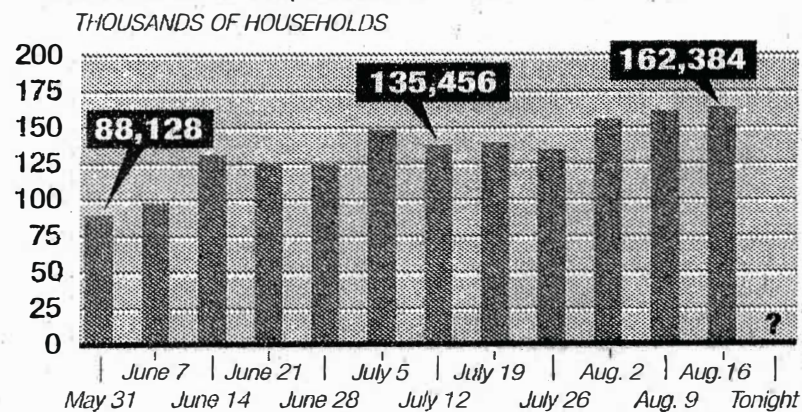
TELEVISION 'SURVIVOR' WATCH

Here is the average national audience for each episode of "Survivor" on CBS.



Source: Nielsen Media Research

Here are the average number of southeast Wisconsin households for each episode of "Survivor."

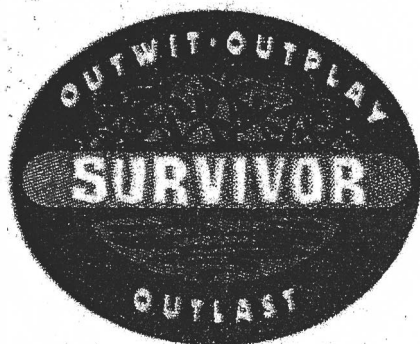


DAVID ARBANAS/Journal Sentinel

WEDNESDAY MIDDAY

August 23, 2000

IN BRIEF



PALMYRA

Local woman could be 'survivor': As many as 40 million people are expected to watch tonight as Susan Hawk, a Palmyra trucker, could win the \$1 million prize in the concluding episode of "Survivor," the summer's biggest television hit.

The program will air at 7 p.m. on CBS, Channel 58 in the Milwaukee area.



Hawk

Produced last spring on the tiny island of Pulau Tiga in the South China Sea, "Survivor" started airing May 31, when viewers saw 16 people marooned with little more than the clothes on their backs and a ration of rice. Now, only four remain. The winner will be chosen on the basis of skill and popularity.



Colleen

17. Greg likened Colleen to what animal?

- A. A chick
- B. A kitten
- C. A puppy
- D. Eric Burdon

21. Gervase's girlfriend gave birth to his fourth child the week he was ejected from the island. What's his new son's name?

- A. Gervase Jr.
- B. Gunner
- C. Axel
- D. Rattana

22. What is a butok?

- A. A beetle larva eaten live by the islanders in a competition.
- B. A type of snake found on the island.
- C. The type of fish caught by most often by Richard.
- D. Something the frequently-nude Richard kept flashing in his fellow castaways' faces.

Your 'Survivor' score

If you got 0-5 answers correct: You have a full, rounded life.

If you got 6-10 answers correct: You probably watched "Survivor" just enough to decide it was beneath you.

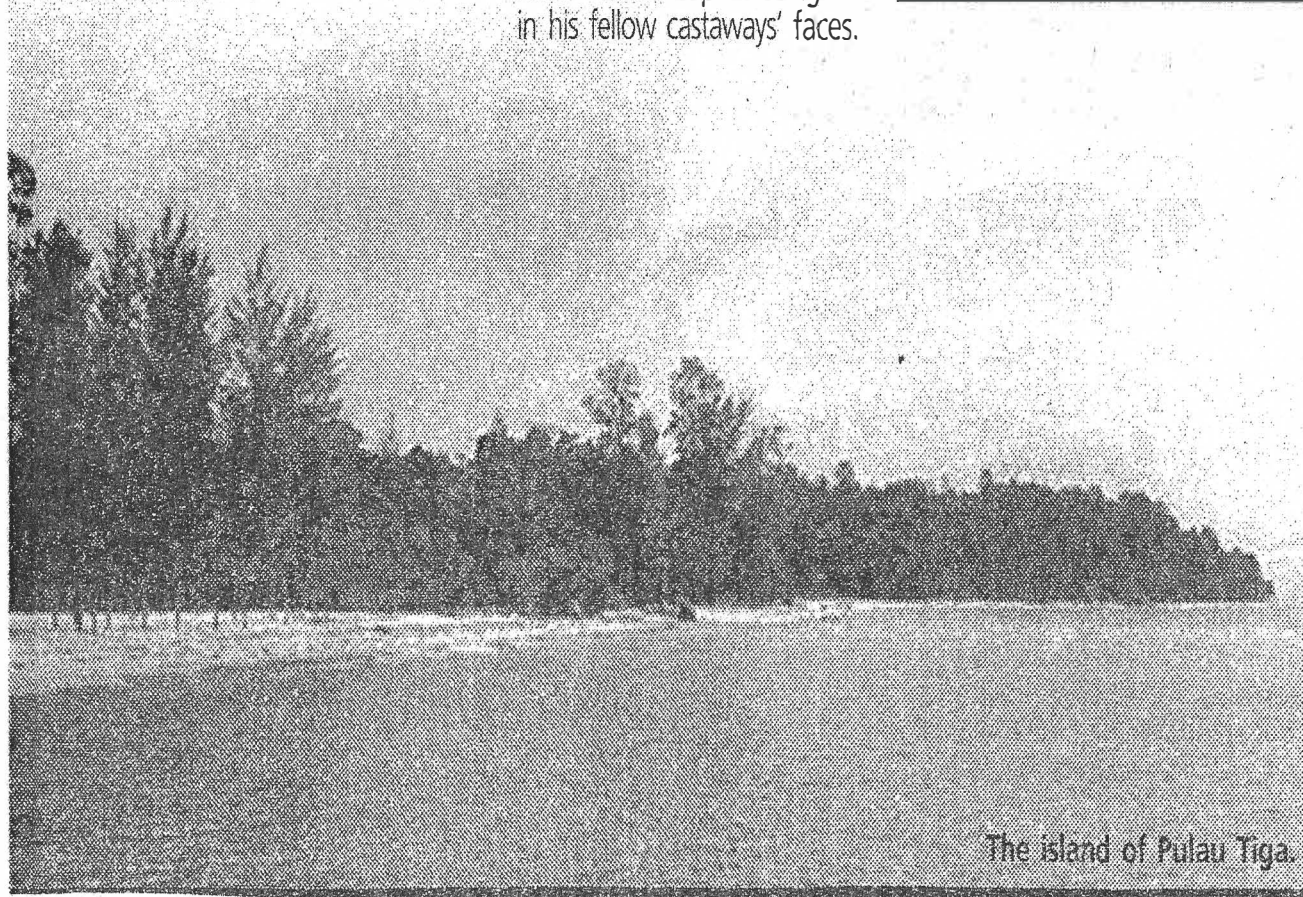
If you got 11-15 answers correct: You're right on the fringe of being a pop-culture addict.

If you got 16-20 answers correct: Your calendar already is cleared for next year's "Survivor II."

If you got 21-25 answers correct: You're probably also hooked on "Big Brother," "The Real World" and "Making the Band" and in desperate need of a "reality TV" intervention.

Correct answers:

1-B. 2-A. 3-A. 4-B. 5-B. 6-A.
7-C. 8-B. 9-C. 10-C. 11-B.
12-B. 13-C. 14-C. 15-B. 16-A.
17-B. 18-C. 19-C. 20-A. 21-B.
22-A. 23-C. 24-B. 25-B.



The island of Pulau Tiga.