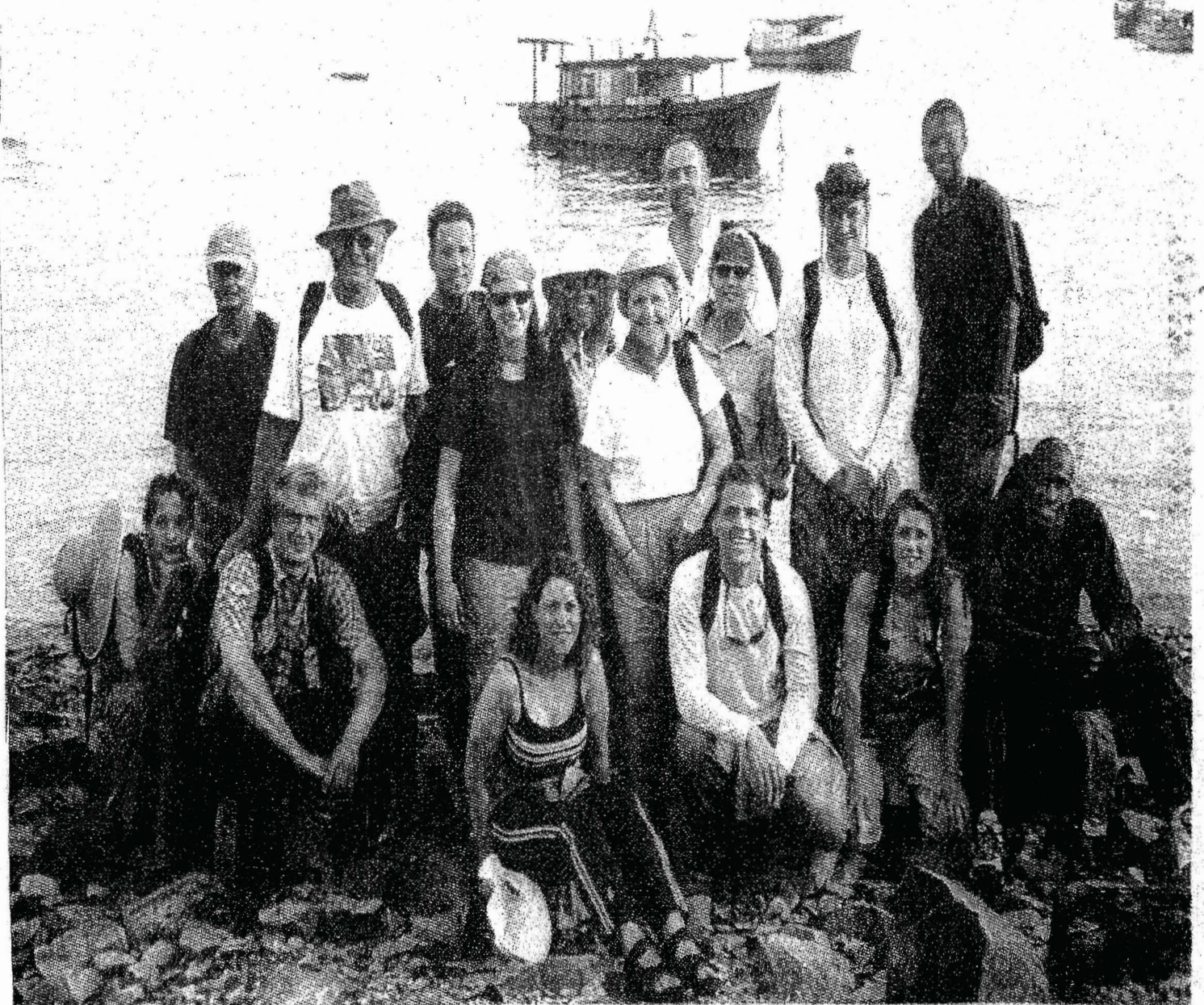
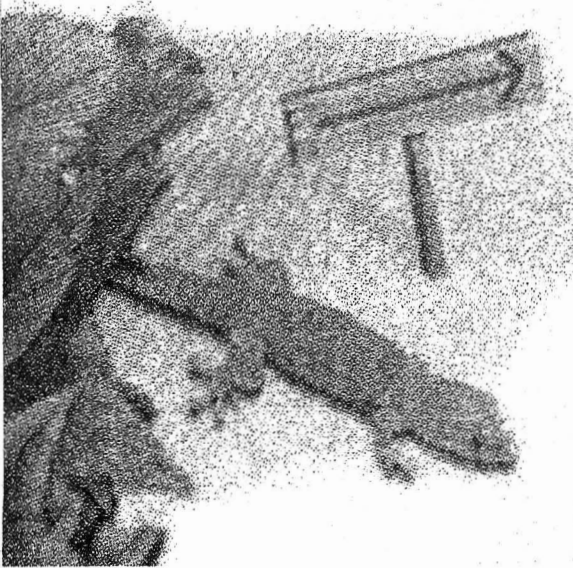


Immunity challenge

WEDNESDAY, AUGUST 23, 2000



Sixteen hopefuls were all smiles as they departed for the adventure of "Survivor." Tonight, one will have 1 million reasons to smile a lot more.

Survivor
L. Hawk, Survivor
8-23-2000

1. What is the title of the "Survivor" theme song?

- A. "Rhythm of Life"
- B. "Ancient Voices"
- C. "Island Echoes"
- D. "Life Echoes of Ancient Rhythmic Island Voices"

2. What does host Jeff Probst say represents "life" on the island?

- A. Fire
- B. Water
- C. Fish
- D. Dental floss

3. Rudy said Dirk's Bible was good for what on the island?

- A. Using the pages as toilet paper.
- B. Surviving the 39 days on the island.
- C. Evening prayers.
- D. Balancing on his head so he can continue to walk with the military precision he learned in the Navy Seals.

4. What part of Sean's body is pierced?

- A. His ear
- B. His nipple
- C. His nose
- D. His tiny little peabrain

5. What did Jenna name the three chickens won by the Pagong tribe?



"Survivor" host Jeff Probst (right) snuffs out the fire of castaway B.B. Andersen, who was the second person voted off the island.

- A. Huey, Dewey and Louie
- B. Breakfast, lunch and dinner
- C. Moe, Larry and Curly
- D. Crispy, extra-crispy and original recipe

6. What luxury item did 64-year-old B.B. bring on the island?

- A. A towel
- B. Sunscreen
- C. A toothbrush
- D. Viagra

7. What did Greg use as a fake telephone?

- A. A seashell
- B. Sean's toothbrush
- C. A coconut
- D. His lit tiki torch, but just one horrible time

8. While there are no rocket scientists among the 16 castaways, which one is a chemist?

- A. Sean
- B. Ramona
- C. Stacey
- D. Susan

9. The island of Pulau Tiga is 20 miles off the coast of what more famous island?

- A. Krakatoa
- B. Java
- C. Borneo
- D. Gilligan's

10. Which radio station was behind a Milwaukee version of the show on Summerfest island?

- A. WMYX-FM
- B. WLZR-FM
- C. WKTI-FM
- D. Wisconsin Public Radio

11. Before hosting "Survivor," Jeff Probst asked questions on what cable quiz show?

- A. "Inquizition"
- B. "Rock and Roll Jeopardy"
- C. "3's a Crowd"
- D. "Win Ben Stein's Money"

MORE QUESTIONS – AND ALL THE ANSWERS – ON PAGE 3

**Take our
'Survivor' quiz or
we'll extinguish
your torch**

BY TIM CUPRISIN
of the Journal Sentinel staff

Based on growing Nielsen numbers, more than 30 million Americans will watch the two-hour finale of "Survivor" at 7 tonight on CBS.

Are these people nuts? No, they're just riding the wave of televoyeurism that Europe has traded to the

New World in exchange for more of our tasty potatoes, tomatoes and maize. The armies of "Survivor" viewers have spent 13 weeks obsessing on whether Richard's Machiavellian tricks will win him the \$1 million, or whether Eagle trucker Susan Hawk — the former Palmyra resident who's spent the last three months teaching America how to talk Wisconsin — is just a wee bit more devious than that devious corporate trainer. It is for those 30 million brave Americans that we offer this "Survivor" challenge:

Strive to survive this quiz

From page 1

12. Why was the merged tribe of Tagi and Pagong members called Rattana?

- A. It contains the first initials of the surviving castaways.
- B. There are lots of rattan trees on the island.
- C. There are lots of rattan chairs on the island.
- D. Pier One is a major sponsor of the show.

13. How many of the castaways are Wisconsin natives?

- A. One
- B. Two
- C. Three
- D. All 16

14. Susan had trouble spelling the names of the people she voted off the island. How did she spell Sonja, the first to go?

- A. S-o-n-y-a
- B. S-a-u-n-a.
- C. S-o-u-n-a.
- D. G-e-r-v-a-s-e.

15. Which castaway has a beard in the finale, but didn't at the beginning of the show?

- A. Richard
- B. Rudy
- C. Greg
- D. Susan

16. Gervase nearly got voted off when he compared women to what?

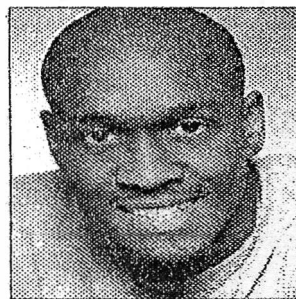
- A. Cows
- B. Chicks
- C. Kittens
- D. Pitchers of warm, flat beer.

18. Whose chauvinism helped get him voted off?

- A. Greg
- B. B.B.
- C. Joel
- D. Will Mega. (No, wait, he's the guy who got kicked off that other reality show, "Big Brother").

19. The show hinted that which two castaways had gotten romantic?

- A. Colleen and Gervase
- B. Colleen and Joel
- C. Colleen and Greg
- D. Richard and Rudy



Gervase

20. What glitch on CBS' "Survivor" Web site led some to believe Gervase would win?

- A. He was the only castaway without a red X superimposed over his picture.
- B. His picture was noticeably larger than the photographs of the other 16 castaways.
- C. A synopsis of Episode 13 accidentally was posted.
- D. The address of the Web Site is www.gervasewins.com.

23. What are the words on the official "Survivor" logo?

- A. Watch your back
- B. Who'll be the last one standing?
- C. Outwit, Outplay, Outlast
- D. Crush, kill, destroy



Probst

24. What's the name of the bar where Kelly drank Bud Light with host Jeff Probst after she won last week's reward challenge?

- A. Buddy's Place
- B. The Survivor Bar
- C. Club Borneo
- D. Elsa's

25. Sean won a night on a yacht after guessing that drinking which liquid kills intestinal parasites?

- A. Saltwater
- B. Kerosene
- C. Distilled water
- D. Bud Light