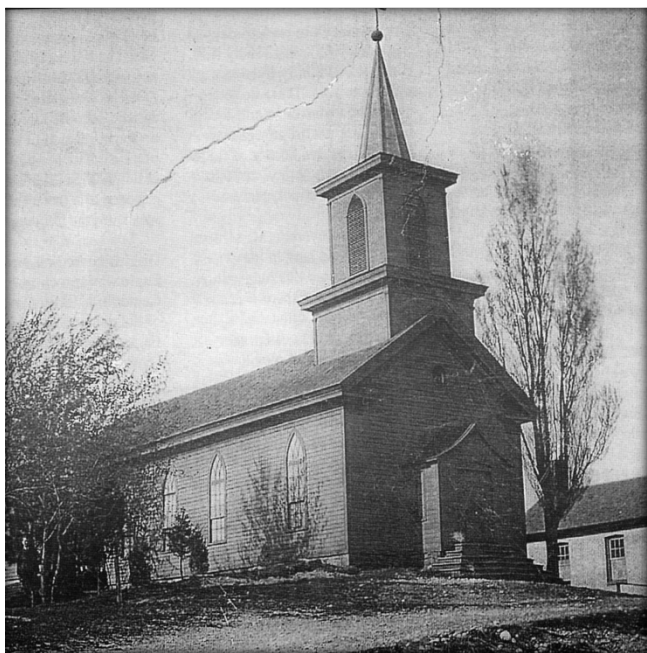


## **First St. Theresa Church Built 1852**



On Christmas Eve, 1851, Bishop John M. Henni bought an acre of land from William and Susanna Kline for one dollar. It was designated for the 'Roman Catholic Congregation of Eagle Center and neighborhood.' A small frame building was erected there in 1852. There were 26 pews with an additional four pews in the gallery. *Mariangela Pledl, St. Theresa Church Directory 2002*

## **Small School Built Near Old Cemetery 1852**

The early members of St. Theresa Parish longed to educate their children in a Catholic school, and in 1852 a small one-room log school building was erected on land near the old cemetery west of the village. The blackboard was made of wide planks that were painted black, and the children sat on rough wooden benches. *Mariangela Pledl, St. Theresa Church Directory 2002*