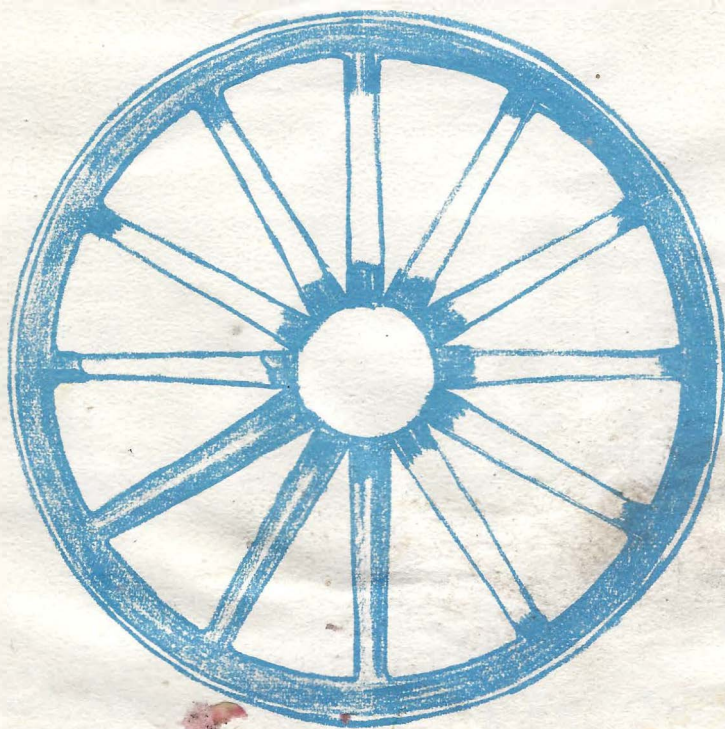


EAGLE METHODIST CHURCH
EAGLE, WISCONSIN

WE BUILD FOR CHRIST

OUR BUILDING PROGRAM MUST **ROLL**



*Let's Complete the Wheel with Our Giving,
as We Join Christ in Our Daily Living*

THE PLAN

A one-story building, approximately 30 x 60 feet. Church school rooms on the first floor. Fellowship hall in the basement. Position to be immediately behind the present building.

THE COST

Our architect, Mr. Gregory Lefebvre of the firm of Lefebvre and Wiggins of Milwaukee, has given us an estimate of approximately \$50,000 for the new building and the remodeling of parts of the old building as outlined on the following pages.

THE NEED

There is an immediate need to replace the heating system and to provide additional educational space. The building committee has determined that the initial stage, the bare building, can be erected for approximately \$30,000, including the new heating system, the sewers and dry wall, limited cabinet space in the kitchen, and a cement floor between the basement and upstairs.

IN CHARGE

As a means of saving money, and because we believe we should be able to do this ourselves, the Building Committee and Official Board have endorsed the idea of having our own Building Fund Committee attend to the task of raising the necessary funds for this program. Our complete and loyal support of their program will save us money and put more of it into the building fund.

OUR FINANCIAL PLAN FOR BUILDING

July 17, 1960: Loyalty Sunday

- A) Pledge cards will be given to every member and constituent of the church.
- B) We want as much cash brought in as is possible to get within a short time.
- C) In addition: We are asking for pledges covering a "100-week period." The consistent weekly giving has been proved the most advisable method.
- D) The "100-week period" will run from August 7, 1960, through July 1, 1962.
- E) Building Fund envelopes will be given to each party pledging unless they make other specific arrangements.

WHEN WILL THE OPERATION BEGIN?

At present, Mr. Lefebvre is working on the final plans for the initial stage. This plans will be completed by mid-August, 1960, at which time the Building Committee will obtain bids on these plans to determine how much we can safely undertake.

These plans will then be submitted to the congregation, the District Board of Church Building and Location, and the State Industrial Commission.

Finally, when these detailed plans are fully approved, the Building Committee will at last be able to set a schedule, let contracts, etc.

We hope to start in early September, 1960.

A Message from Our Pastor -

Dear Friends:

There is a saying among Ministers which goes something like this: "A building is as good as the number of people it can adequately accommodate." In our few short weeks with you, we have come to love Eagle Church and its people. We have heard of the wonderful work which has been accomplished in the past. The fact remains, however, that this work can grow and reach even greater heights, but it can only do so if more additional facilities are offered.

Our Sunday School Department is doing an outstanding job at present, even though handicapped with inadequate facilities, and we are confident that they can and will do even greater work if better facilities are offered.

Along with the Building Committee, we have been doing all in our power to make such facilities possible. As is noted in this leaflet, we are nearing the beginning of the actual work. You can help us make this dream a reality. Let us join together in unity, both through our prayers and our gifts, as together we strive toward a great Kingdom of God among men.

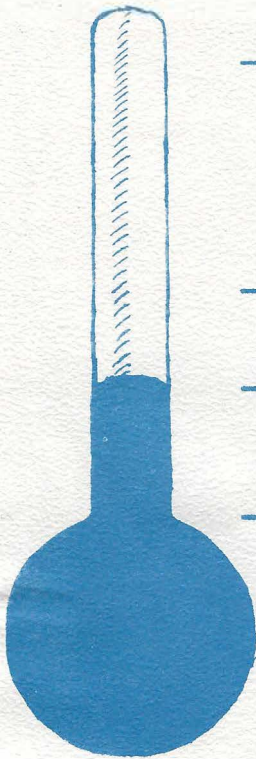
Please help us in this great work.

Your Pastor,

Bob Ochsenrider

Bob Ochsenrider

THE THERMOMETER TELLS THE STORY



\$50,000

Total cost for completed building.

(NOTE: Cost of furniture and church school equipment is not included in this amount.)

\$30,000

Cost for the initial stage of the building.

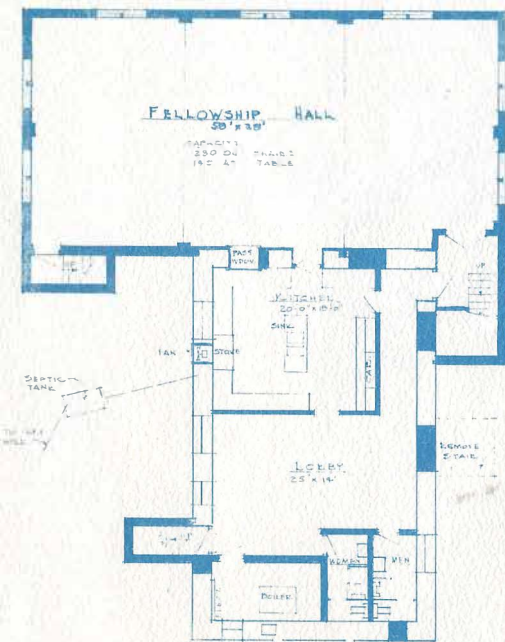
\$14,500

Cash on hand.

0

- 1) As you see, the initial stage of our building program will cost us \$30,000, some \$15,500 more than our cash on hand. This means that we must have an additional \$15,500 to complete the payment of the initial stage. Our need in this campaign is to gain enough cash and pledges to cover the greater share of this amount.
- 2) The goal still remains the completed building, for the initial stage will not satisfy our complete needs. If this financial goal is to be reached, we must necessarily go beyond this \$15,500. Your support in this campaign will determine how much of our need will be satisfied.

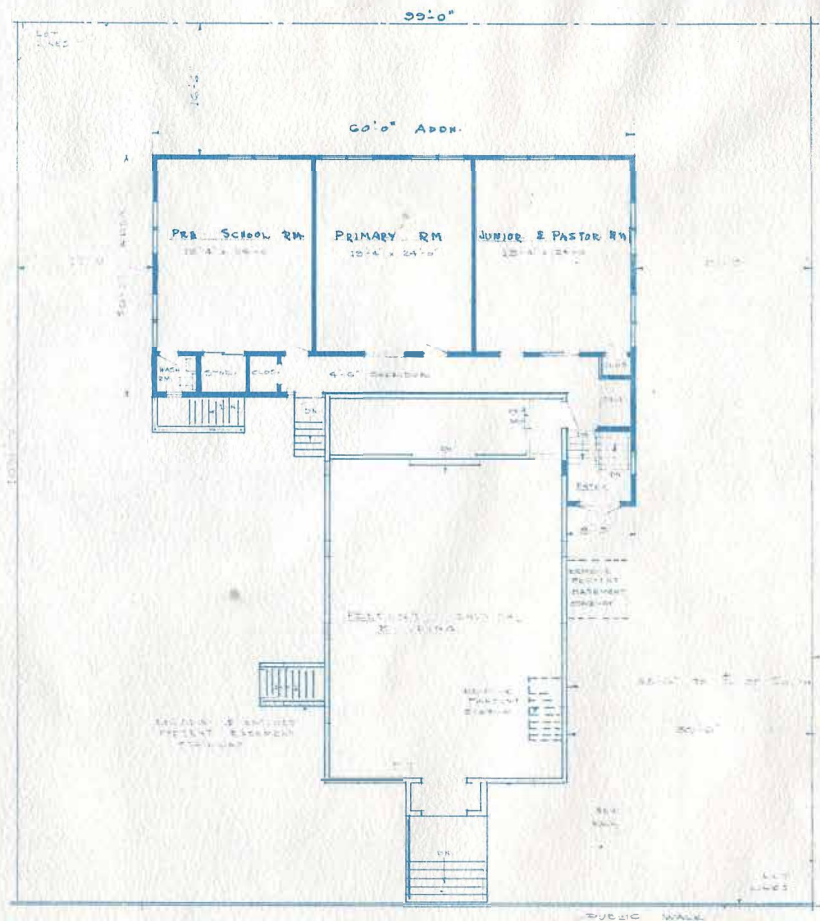
PRESENT WALLS TO REMAIN
 PRESENT OPENINGS CLOSED OFF
 NEW WALLS & WINDOWS



BASMENT • PLAN

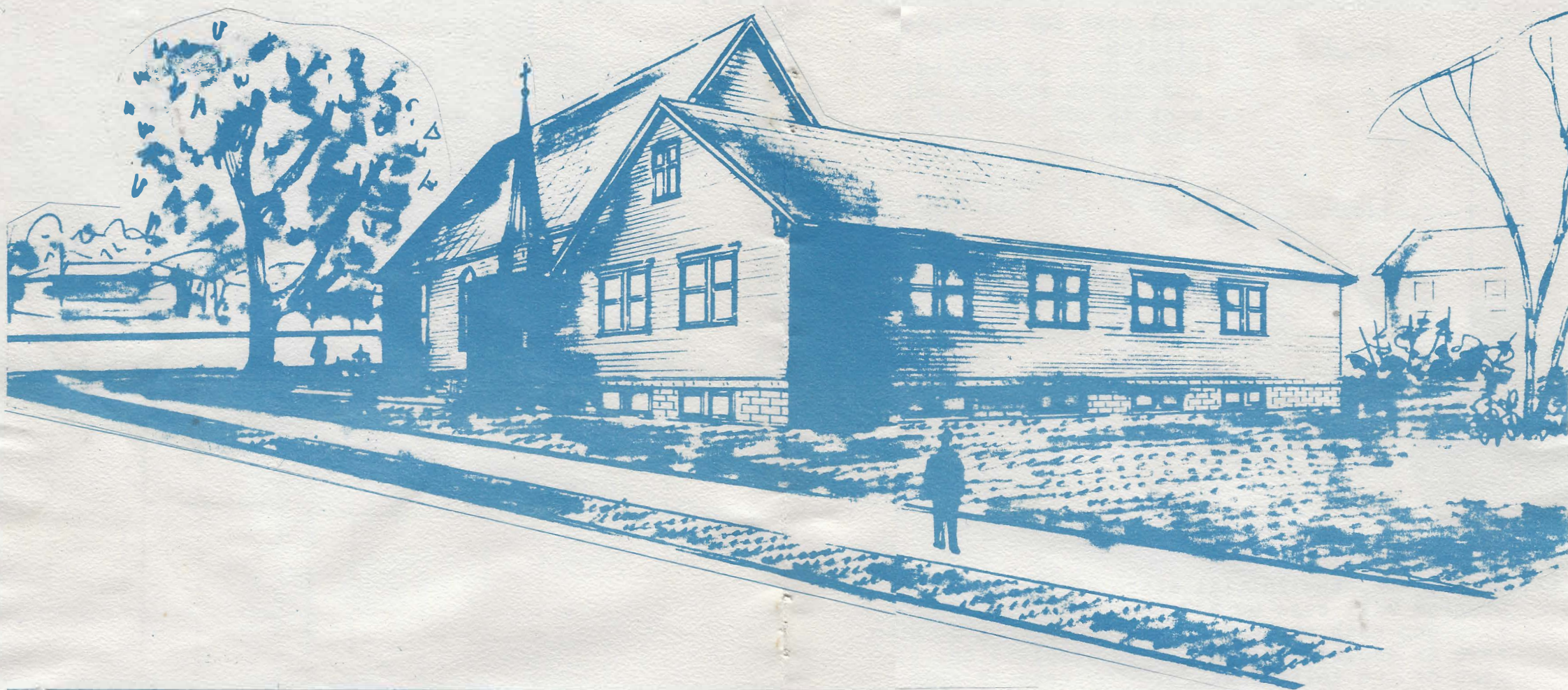
SCALE: $\frac{1}{8}" = 1'-0"$

PROPOSED ADDITIONS TO
 EAGLE • METHODIST • CHURCH
 EAGLE, WISCONSIN



FIRST • FLOOR • PLAN

SCALE: $\frac{1}{8}" = 1'-0"$



EAGLE • METHODIST • CHURCH

E A S L E

W I S C O N S I N

LEFEVRE - WIGGINS
& ASSOCIATES
Architects - Engineers
3000 N. TEUTONIA AVE.
MILWAUKEE, WISCONSIN