

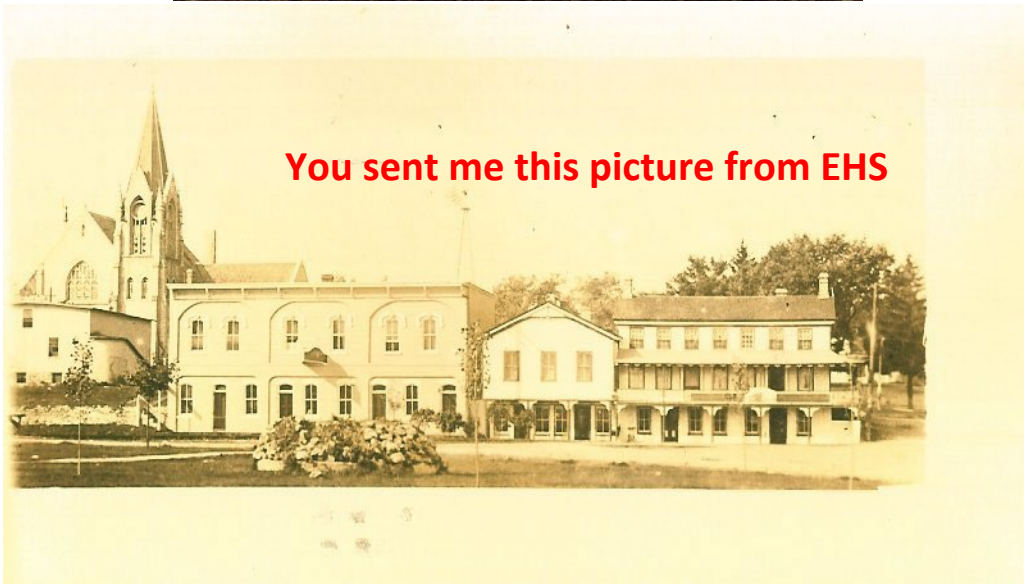
Matt Bovee Hotel-Restaurant

The picture you sent is what I think was the original railroad hotel, and is the left-most building attached to the Kline (Sasso/Suhmer) restaurant below.

**This picture you
sent me from
EHS**



You sent me this picture from EHS



I looked for any information on “Star Hotel” or “Star Restaurant” but found nothing, yet Matthias (Matt) Bovee is listed as proprietor of the “Commercial Hotel” in Eagle in the “Waukesha County Directory” of 1899, while Frank Seefeld is listed as proprietor of the “Diamond Hotel” in Eagle in that same directory.

This ad is in the "Wright's directory of Waukesha 1899 P. 292

THE COMMERCIAL HOTEL

M. J. BOVEE, Proprietor.

L. A. W. HOTEL.

Rates: \$1.40 per Day.

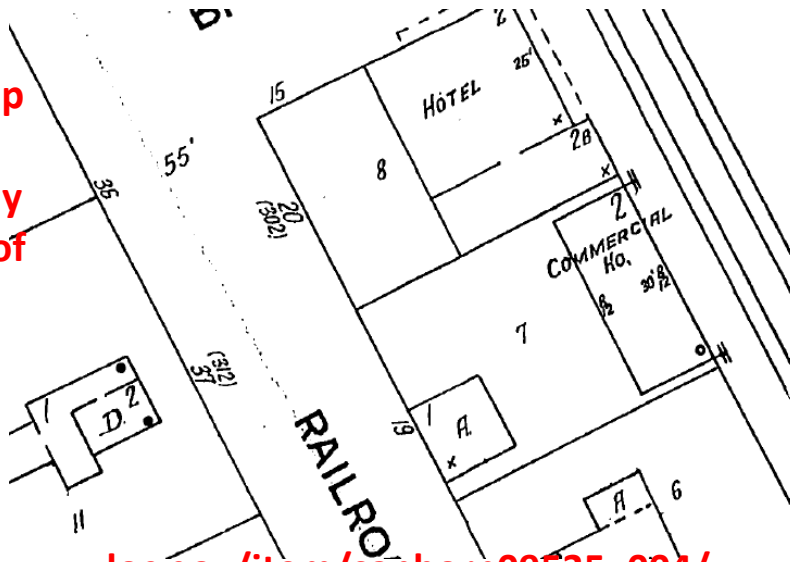
THE BEST PLACE
TO STOP :: :: ::

Large, well ventilated rooms, newly and elegantly furnished. First class
table board. Board by day or week.

EAGLE, WAUKESHA COUNTY, WISCONSIN.

A 1924 Village of Eagle Map by The Dadrman Company calls it the "Commercial
Hotel".

This is a fire
insurance map
by Sanborn
Map Company
1924 Village of
Eagle



https://www.loc.gov/item/sanborn09535_004/

An article written by Alice Baker in 1965 tells of the manager of the Railroad House hiring two girls to work as waitresses for the railroad workers at the hotel. The railroad came through Eagle in 1851.

years. Henrietta Macholdt made her first contact with Eagle at the tender age of seven when the Milwaukee-Mississippi railroad was being put through to Whitewater and ultimately to the Mississippi River.

She and her sister Mary were hired by the manager of the old Railroad house, which stood on the site of the later Wm. Crank Hotel. (This later building was razed in 1958.)

The two girls were the waitresses whose duties were to bring food down from the second floor to the dining room for the hungry railroad workers. For girls

Note that it was later named the "William Crank Hotel".

I'm not sure when "Kline's Hotel" was built, but it had to be around the same time the railroad depot was being built and was quickly renamed the "Diamond Hotel" as Alice Baker points out in here article. An article in the Waukesha Journal in 1890 listed Jacob Snyder as proprietor of the Diamond Hotel,

Jacob Snyder, proprietor of the Eagle Diamond hotel, was in Palmyra, Saturday, laying in a Sunday's stock of provisions from our city markets.

followed by Frank Seefeld in 1894.

F. Seefeld, the new proprietor of the Diamond Hotel, has the opening Thursday, concluding with a ball in the evening.

Seefeld's obituary, on our EHS website, tells that he and his wife owned and operated the Diamond Hotel in Eagle for 27 years, but sold their interests in 1921 and moved to West Bend, WI. An ad appeared in the Racine Journal Times in 1922.

Racine Journal Times Dec 27, 1922 P.14

FOR RENT
FOR RENT
The Diamond Hotel, Eagle, Wisconsin, across from Milwaukee depot; partly furnished, on a long term lease, with immediate possession. Inquire W. C. Mertens & Co., 526 Caswell Bldg., Milwaukee, Wis., or address U-71, Journal-News.

I'm not sure when the two hotels merged.

I have all backup articles with sources if you need them

Please read my file on Matthias Bovee.

Mike Rice