

Notes from newspaper article, paper and date unknown:

### **EAGLE VILLAGE LANDMARK IS BEING TORN DOWN by Alice Baker**

The building which William Crank put up for a saloon is now being torn down. It was built in 1879 on the site of the old Railroad house which was put up to accommodate the men that built the Milwaukee and Mississippi Railroad to Milton, Edgerton and finally to Madison. The railway to Eagle from Waukesha was finished Jan 7, 1852. Tracks west of Eagle must have been laid to have the workers brought in for meals by train. "The trains came in at just such a time and the men had 20 minutes to eat. The kitchen was upstairs and dining room down. We girls had to lug steaming food down and dirty dishes up. We went back and forth dozens of times."

Kline's Hotel (right), was built in 1863 and changed to the Diamond Hotel in 1876. To the left was a dance hall and left again was the Crank hotel, the Eagle Hotel.



17 Jan 1973

"Beyond the Diamond Hotel was the Eagle Hotel, and this will be the motel, four units of which are nearly ready. If motorists were stranded in Eagle because of snow or ice, Mike (Sasso) could and would rent the units right now."

*The Milwaukee Journal*, 22 September 1974

"Eagle was a railroad center then, with 18 passenger trains a day on the Milwaukee to Madison run and a branch line to Elkhorn and Burlington. There is now only one freight train a day. There was a livery stable under the Eagle Hotel with a ramp to bring horses into their stalls."



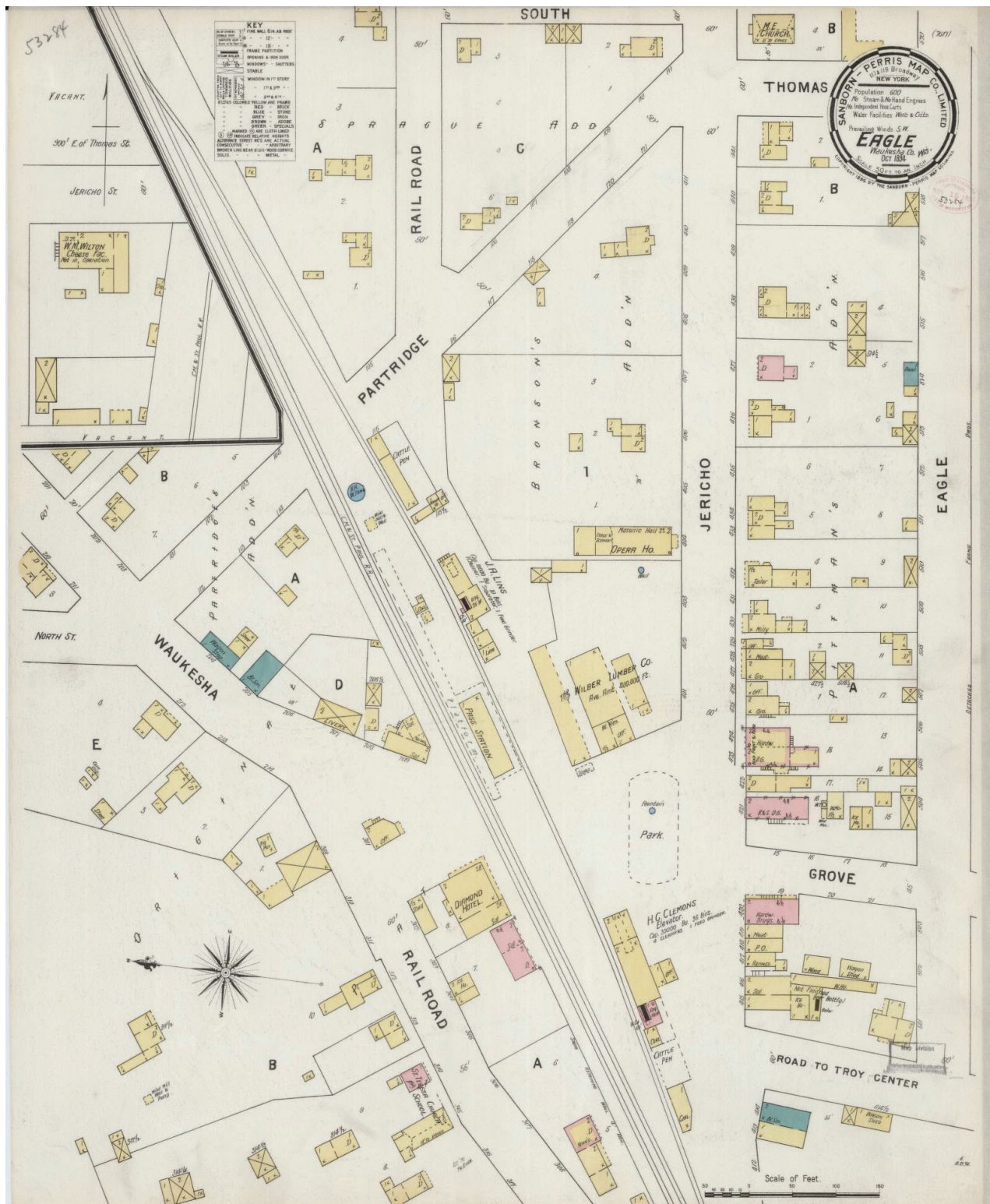
After the death of William Crank in 1890 the hotel was taken over by Matthew Bovee, perhaps the adoptive father of Flora Harris.

*Waukesha Daily Freeman*, 2 July 1891

"a grand celebration of the 115 anniversary of the Declaration of Independence will be HELD AT EAGLE, WIS and "the eagle" will scream with fire works and cannon. At Lins' grove the following programme will be presented: Orations by Franz Eschweiler; music by Eagle Cornet Band, prayer by Rev. L. Clendening, singing by Eagle Choir, reading of Declaration of Independence by W.W. Perry. Baseball and Scotch games and horse races will follow. At dusk a grand display of fireworks and a dance at Eagle Hotel finishes the day. Music for the ball will be furnished by Clauder's orchestra of Milwaukee."







1894 Sanborn map Eagle, Wisconsin. Diamond Hotel in yellow, middle bottom third.  
William also owned lots 6 and 7 of Block A in W.J. Kline's plat.

In the *Waukesha County Gazetteer and Farmers' and Land Owners' Directory* 1890-91, the establishment is described as a saloon and billiard hall opposite the CM&St P depot.



*The Milwaukee Sentinel*, 7 September 1890 reported his death as:

“William Crank, respected citizen of Eagle, dies.”

*The Waukesha Centennial* 28 August 1890 was much more informative.

William Crank, at his home in Eagle, August 28th, 1890, at 2:15 p. m., aged 37 years, 8 months and 7 days.

Mr. Crank had been ailing for some time with kidney complaint, but kept up and in charge of his business to within three or four days of his death, when he seemed to rapidly fail.

The deceased was born in this town of very respectable German parents and was one of a family of seven children, consisting of five boys and two girls, of which number three brothers and two sisters survive him. Soon after arriving to his majority he was married to Miss Alzina Markley, with whom he did not live happily and a legal separation followed. On Dec. 27th, 1887, he was again married to Miss Flora Bovee, a very estimable young lady, the adopted daughter of Matt. J. Bovee. She is now left a widow with one child, a bright little boy about two years old. In business matters Mr. Crank was quick of judgment and just in his dealings with all, appreciative of acts of kindness which he never forgot, and would cling to his friends when he thought them to be in the right if forsaken by all others. We shall miss him from our midst. His funeral took place at the house Aug. 30, at 2 p. m. The ceremonies were simple but impressive and his remains were placed to rest in the new cemetery near the village.

