

"The Town received its name in a rather singular manner, as follows: In the year 1836, while Thomas Sugden, John Coats and a Mr. Garton were prospecting, they came to a beautiful prairie about one and a half by two and a half miles in area. Here, hovering and curving over a large mound, near the present residence of Ebenezer Thomas, was a monster bald headed eagle. From this incident and time, the prairie and Town were called Eagle.

The country, in its natural state, was diversified by springs, brooks, marshes, prairie, and burr oak openings. The arable soil is slightly variable in composition, being, for the most part, a rich loam and gravel, and is quite productive. A chain of bluffs passes through the northwest part, but the greater part of the land is tillable. Here, as elsewhere in the county, the inhabitants suffered the deprivations incident to pioneer life, which have become the subjects for many an evening tale."

*The History of Waukesha County, Wisconsin (1880)*



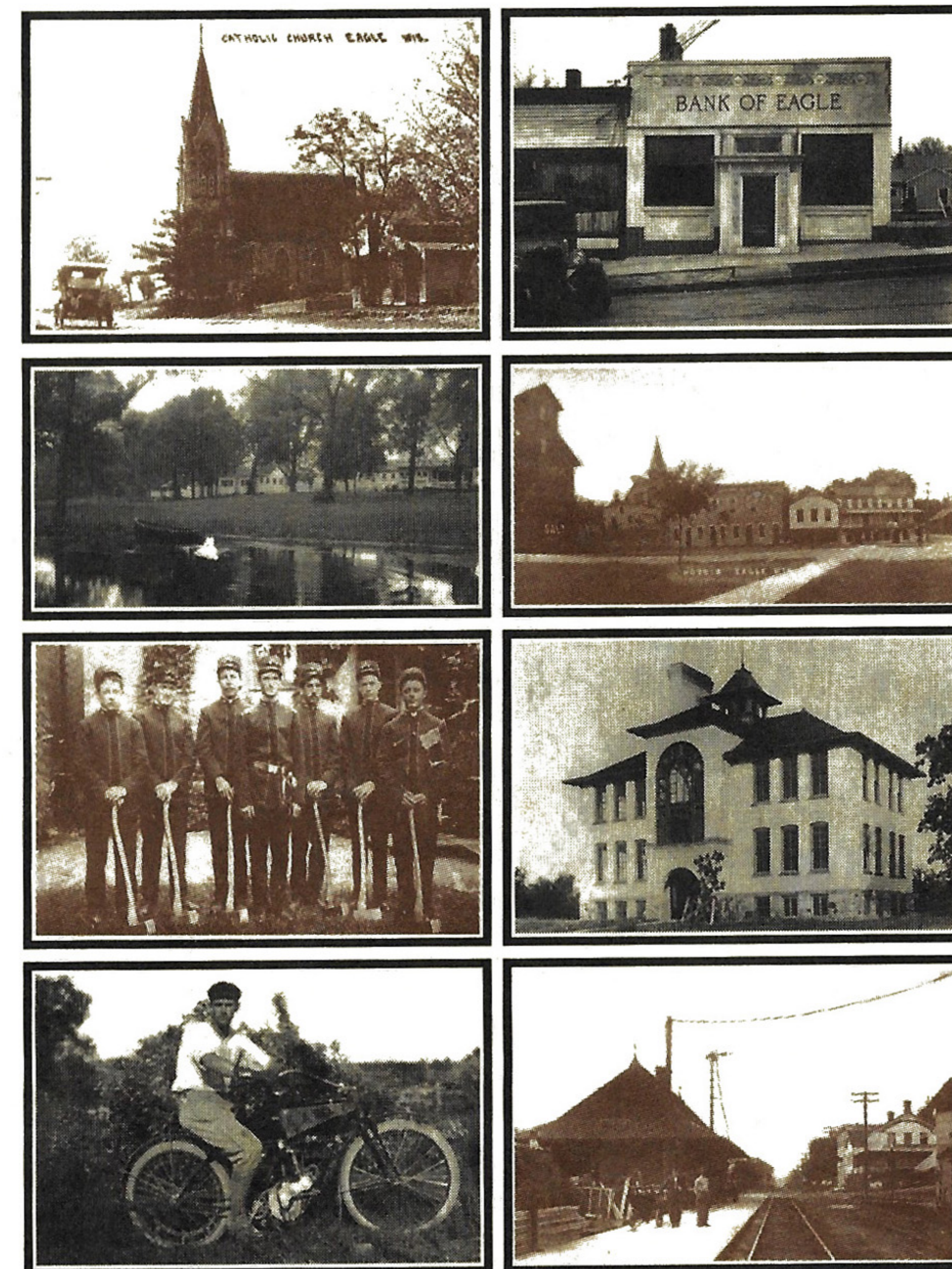
*The Eagle Historical Society is a non-profit organization whose purpose is to collect and preserve printed materials and material objects illustrative of life, conditions, events, and activities of the past and present in the history of Eagle and the surrounding areas.*

*The society maintains a museum and historical library which is open from 9 am to Noon, Wednesdays, Fridays, and Saturdays.*

*Members receive our quarterly newsletter as well as announcements of special events. Your membership also supports the continued discovery, preservation and maintenance of the many historical artifacts at our museum. You can join by contacting our office or by visiting our website at [www.eaglehistoricalsociety.org](http://www.eaglehistoricalsociety.org)*

Eagle Historical Society  
 217 West Main Street • PO Box 454  
 Eagle, WI 53119  
 262-594-8961  
[www.eaglehistoricalsociety.org](http://www.eaglehistoricalsociety.org)

# *Eagle, Wisconsin*



*Not just a witness to  
history..*



*...but a participant.*

*Eagle sits at the edge of the Southern Unit of the Kettle Moraine, straddles historic rail and transit lines, and touches lakes, rivers, mines, fields, and state and national history. Look a little deeper into the past of this community and you'll find a treasure trove of stories you never knew existed, and portraits of personalities who are fascinating in their complexity. There's the man who installed lighting in his house with a spring-fed turbine, years before electricity came to the area; the string of bank robberies in the late 20th century; the Eagle resident who was recognized internationally for directing relief and reconstruction efforts in China; the discovery of the 15-karat glacial diamond, later owned by JP Morgan, and its infamous disappearance; the defunct coffin factory that became for town's first cheese plant; the role that early Eagle residents played in the campaign to abolish capital punishment; the use of the environment in early commerce, including spas, ice, and bottled drinking water; the Shakespeare buff who built a controversial house shaped like a shoe; the growth of organizations such as the Modern Woodmen of America and the Royal Neighbors of America; the town's place along the legendary "Bobby Line" and the deadly 1922 train wreck.*

*The Eagle Historical Society can help you explore these stories, and many others. Come back to visit and we'll show you how much more there is to know.*

### *Timeline of Eagle Events*

