

# Historic Virtual Tour of Eagle, Wisconsin

Stroll the streets of the village and discover the history and architecture of days gone by.

Click the link on each item with your smart phone to connect with an online description of the stories and pictures of the people and places on this brochure that have made Eagle the cozy community it is today.

## [Tour Introduction](#)



## [Brief History of Eagle Wisconsin](#)

*Research conducted by  
Eagle Historical Society, 2018*

## [Tour Thank You](#)

## **Village Hall**

820 Main Street \*Parking Available

### **1. Alice Baker Memorial Library**

*820 E. Main Street*



### **2. Eagle Nature Trail**

*Located at north end of  
Library Parking Lot*



### **3. Schroederville**

*The 2 blocks between  
Schroeder Street and  
East Avenue*

**Can you find these  
homes?**



### **4. Other Distinctive Homes On Main St.**

**Can you find these  
homes?**



### **5. Bobby Line**

*Main Street and  
North Parkview*

**Ran along the east  
edge of the Village  
Park**



**6.Eagle United  
Methodist Church**  
*305 E. Main Street*



**7.Eagle Historical  
Society**  
*217 E. Main Street*



**8.Former Eagle  
Hospital**  
*224 E. Main Street*  
Currently Private  
Residence



**9.Sears Kit Home**  
*210 E. Main Street*  
Currently Private  
Residence



**10.Masonic Lodge/  
Opera House**  
*132 E. Main Street*



**11.Village Square/  
Gazebo**

*Parking Available next  
to Family First Care  
Clinic*



**12. Lumber Company**  
**108 Grove Street**



**13.Business Block**

101-117 E. Main Street  
*Currently Interior Images,  
Ameriprise Financial  
Services, Steinhoff Law  
Offices*



**14.Former Post Office**

123 East Main Street  
*Currently Freedom  
Firearms*



**16.Bank Block**

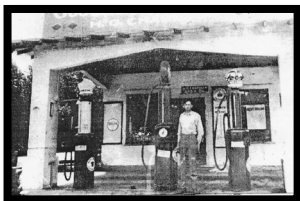
03-111 W. Main Street  
*Currently Twisted Fork  
Saddle Shop, Rustix,  
Knucklehead Pub*



**17. Chapman**

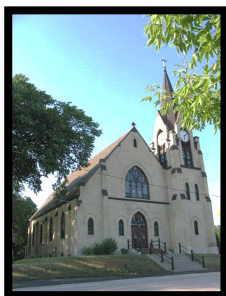
**BP**

*101 South Road*



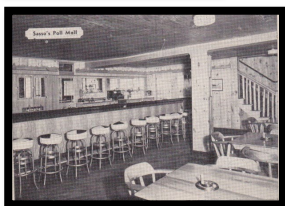
**18. St. Theresa**  
**Catholic Church**

*136 W. Waukesha  
Road*



**19. Sasso's/**  
**Stumble Inn/**  
**Suhmer's Saloon**

*201 Kettle Moraine  
Drive*  
*Currently Red Roof  
Station*



**20. Sidetrack**

*204 Grove Street*  
*Currently Private  
Residence*



**21. Telephone**  
**Company**

*Hwy 67 and 59*



## 22. The Kettle

214 Grove St.



## 23. Historical Marker



## 24. Peardon's Garage

### Diamond Drive-In

110 Waukesha Road

Currently The

Hen House



## 25. Whettam's Boarding House

111 Waukesha Rd.

Currently Private

Residence



## 26. The Pickle Factory

240 Sherman Street

Currently Private

Residence

