

Historic Virtual Tour of Eagle, Wisconsin

Stroll the streets of the village and discover the history and architecture of days gone by.

Click the link on each item with your smart phone to connect with an online description of the stories and pictures of the people and places on this brochure that have made Eagle the cozy community it is today.

[Tour Introduction](#)



[Brief History of Eagle Wisconsin](#)

*Research conducted by
Eagle Historical Society, 2018*

[Tour Thank You](#)

Village Hall

820 Main Street *Parking Available

1. Alice Baker Memorial Library

820 E. Main Street



2. Eagle Nature Trail

*Located at north end of
Library Parking Lot*



3. Schroederville

*The 2 blocks between
Schroeder Street and
East Avenue*

**Can you find these
homes?**



4. Other Distinctive Homes On Main St.

**Can you find these
homes?**



5. Bobby Line

*Main Street and
North Parkview*

**Ran along the east
edge of the Village
Park**



**6.Eagle United
Methodist Church**
305 E. Main Street



**7.Eagle Historical
Society**
217 E. Main Street



**8.Former Eagle
Hospital**
224 E. Main Street
Currently Private
Residence



9.Sears Kit Home
210 E. Main Street
Currently Private
Residence



**10.Masonic Lodge/
Opera House**
132 E. Main Street



**11.Village Square/
Gazebo**

*Parking Available next
to Family First Care
Clinic*



**12. Lumber Company
108 Grove Street**



13.Business Block

101-117 E. Main Street
*Currently Interior Images,
Ameriprise Financial
Services, Steinhoff Law
Offices*



14.Former Post Office

123 East Main Street
*Currently Freedom
Firearms*



16.Bank Block

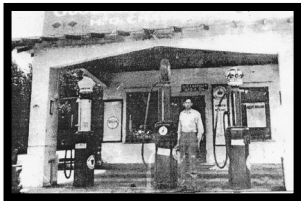
03-111 W. Main Street
*Currently Twisted Fork
Saddle Shop, Rustix,
Knucklehead Pub*



17. Chapman

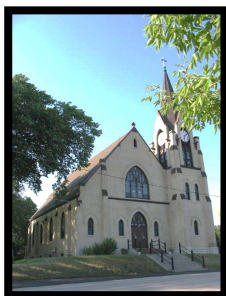
BP

101 South Road



18. St. Theresa
Catholic Church

*136 W. Waukesha
Road*



19. Sasso's/
Stumble Inn/
Suhmer's Saloon

*201 Kettle Moraine
Drive*
*Currently Red Roof
Station*



20. Sidetrack

204 Grove Street
*Currently Private
Residence*



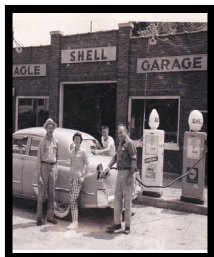
21. Telephone
Company

Hwy 67 and 59



22. The Kettle Gas Station

214 Grove St.



23. Historical Marker



24. Peardon's Garage

Diamond Drive-In

110 Waukesha Road

Currently The

Hen House



25. Whettam's Boarding House

111 Waukesha Rd.

Currently Private

Residence



26. The Pickle Factory

240 Sherman Street

Currently Private

Residence

